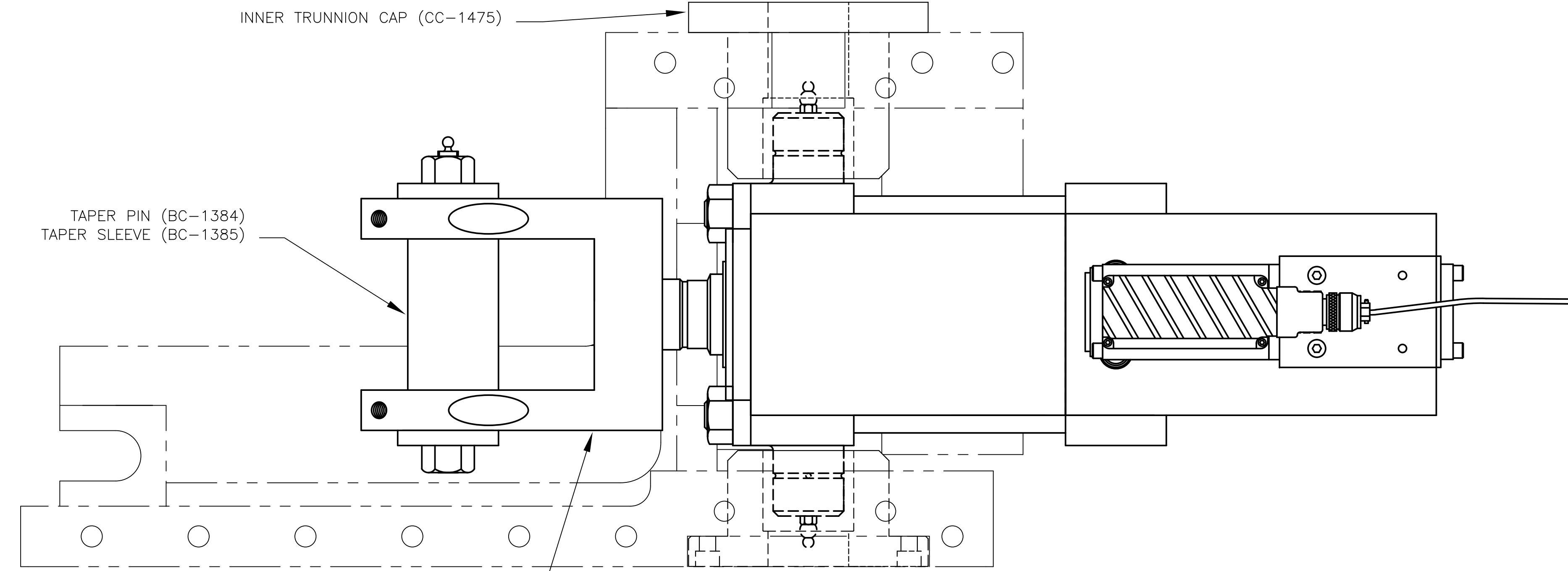


REVISIONS				
REV	DESCRIPTION	ECN#	DATE	INTL
0	INITIAL RELEASE	2095	7/21/08	MW

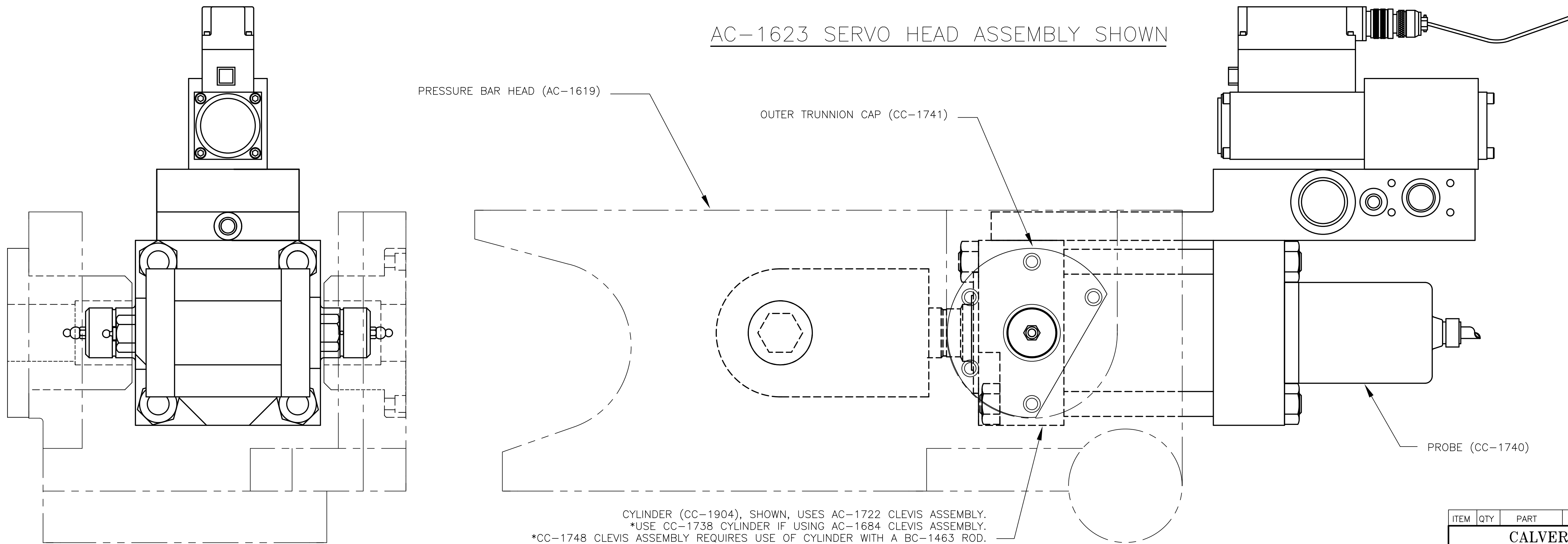
NOTES:

1. ALL DIMENSIONS ARE INCHES, UNLESS OTHERWISE SPECIFIED.
2. SOME LINES REMOVED FOR CLARITY.



ROD END CLEVIS ASSEMBLY (AC-1722), SHOWN, USES CC-1904 CYLINDER.
*USE AC-1684 CLEVIS ASSEMBLY IF USING CC-1738 CYLINDER.
*CC-1748 CLEVIS ASSEMBLY REQUIRES USE OF CYLINDER WITH A BC-1463 ROD.

AC-1623 SERVO HEAD ASSEMBLY SHOWN



ITEM	QTY	PART	DESCRIPTION	REF
CALVERT MANUFACTURING INC. MACHINE DESIGN SPECIALISTS FOR THE WOOD INDUSTRY 245 NORTH ST. LONGWOOD, FL. 32750				
ALL DIMENSIONS ARE INCHES UNLESS OTHERWISE SPECIFIED. TOLERANCES ON:				
FRACTIONS & WHOLE # : +/- 1/32				
2 PL. DECIMALS: +/- .01				
3 PL. DECIMALS: +/- .005				
DEGREES: ±1/2°				
FILE PATH: \ENGI\DRAWINGS\MASTER\PBARS\AC-1623-LIT.DWG				
TITLE: PRESSURE BAR SERVO HEAD SERVO ACTUATOR PARTS LIST		DRWING #:	AC-1623-LIT	REV: 0
DATE DRAWN:	7/21/08	CHECKED BY:	APPROVED BY:	SCALE: 1/2
FILE PATH:	SHEET: 1 of 1			

APPLICATION	PBAR
NEXT ASSY	USED ON

CONFIDENTIAL
THIS DRAWING IS THE PROPERTY OF CALVERT MANUFACTURING INC. AND IS SUPPLIED SOLELY FOR QUOTATION OR FABRICATION. INFORMATION AND THE DESIGN TO CALVERT MANUFACTURING, INC. IT IS NOT TO BE REPRODUCED OR COPIED BY ANY MEANS OR DISCLOSED TO OTHER. THIS DRAWING IS TO BE RETURNED PROMPTLY UPON REQUEST BY CALVERT MANUFACTURING, INC.