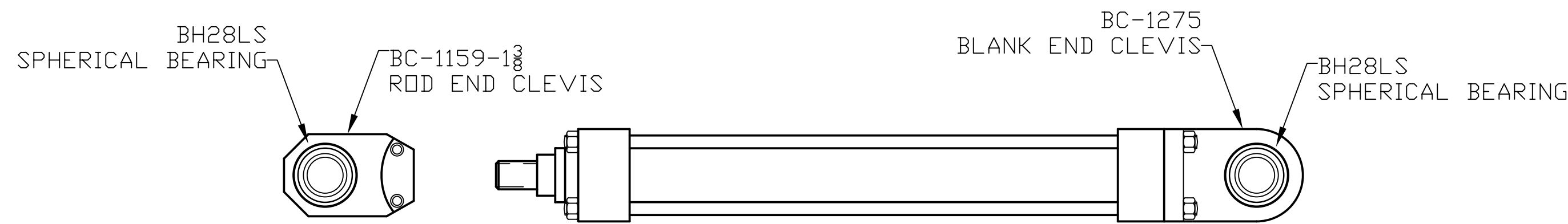
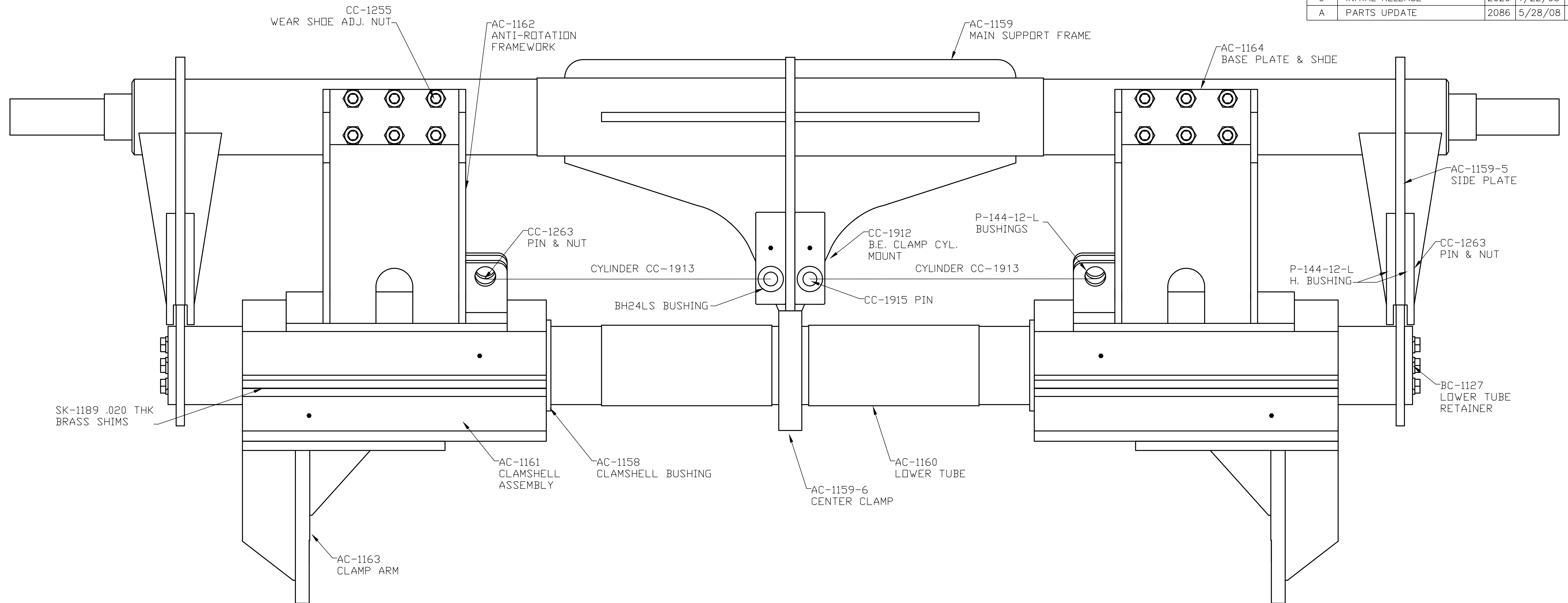
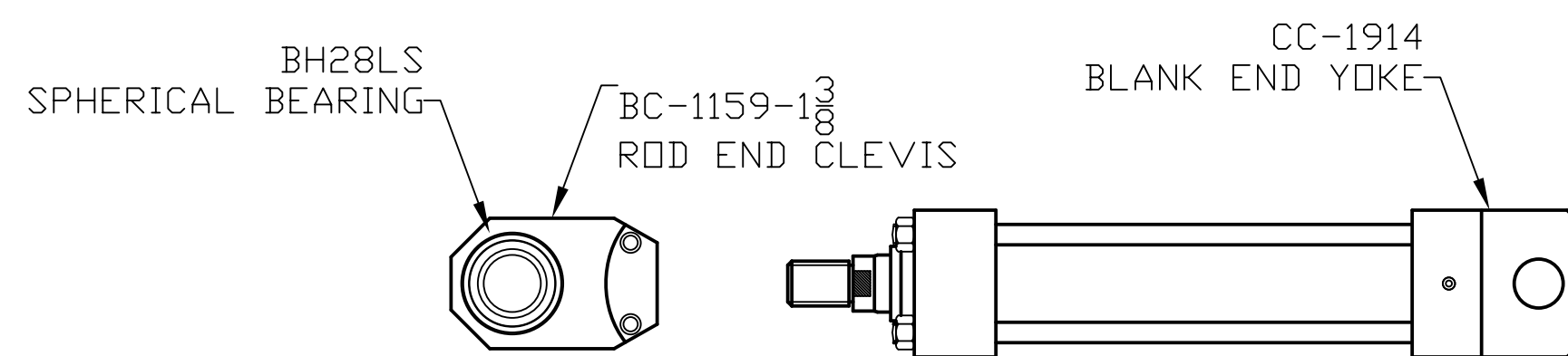


REVISIONS				
REV	DESCRIPTION	ECN#	DATE	INTL
0	INITIAL RELEASE	2029	1/22/08	MW
A	PARTS UPDATE	2086	5/28/08	MW



CC-1278 TRAVERSE CYLINDER (3 1/4" BORE x 19" EFFECTIVE STROKE)  
 QUANTITY REQUIRED (2)



CC-1913 CLAMPING CYLINDER (3 1/4" BORE x 11" STROKE)  
 QUANTITY REQUIRED (2)

CALVERT MANUFACTURING INC.				
MACHINE DESIGN SPECIALISTS FOR THE WOOD INDUSTRY 245 NORTH ST. LONGWOOD, FL. 32750				
TITLE		PARTS LIST, 760 PENDULUM CHARGER, GP STYLE		
ALL DIMENSIONS ARE INCHES UNLESS OTHERWISE SPECIFIED.	DATE DRAWN:	1/22/08	DRAWING #:	AC-1144-LIT
TOLERANCES ON:	CHECKED BY:		SCALE:	NONE
FRACTIONS & WHOLE # : +/- 1/32	APPROVED BY:		SHEET:	1 OF 1
2 PL. DECIMALS: +/- .01	FILE PATH: \\ENGI\DRAWINGS\MASTER\CHARGERS\PENDULUM\M760\AC-1144-LIT.DWG			
3 PL. DECIMALS: +/- .005	CONFIDENTIAL			
THIS DRAWING IS THE PROPERTY OF CALVERT MANUFACTURING INC. AND IS SUPPLIED SOLELY FOR QUOTATION OR FABRICATION. INFORMATION AND THE DESIGN TO CALVERT MANUFACTURING, INC. IT IS NOT TO BE REPRODUCED OR COPIED BY ANY MEANS OR DISCLOSED TO OTHER. THIS DRAWING IS TO BE RETURNED PROMPTLY UPON REQUEST BY CALVERT MANUFACTURING, INC.				